



## Techrider My Pussy Real Soft

### Kontakt Künstlerische Leitung:

Sonja Silber  
sonja.silber@gmx.ch  
078 626 12 32

### Kontakt Technik:

Mariana Vieira Grünig  
mariana.gruenig@gmail.com  
079 904 38 98

### Team

1 light technician

1 stage designer

1 musician (sound)

1 performer

---

### WICHTIGE INFO:

**Das Stück lässt sich unkompliziert auf kleine Bühnen mit simpler Technik adaptieren. Lasst euch von den folgenden technischen Angaben also nicht abschrecken. Im minimum brauchen wir eine Bühne, zwei Scheinwerfer und ein Publikum ;)**

"My Pussy Real Soft" is a theatre piece for one performer and a one musician and lasts about 1 hour.

The spatial concept provides for a frontal arrangement with a hanging metal ring and a cloth. The room is preferably black, with back walls (or cloth) to be used for projection.

Ideally, the room's measurements are:

Breite: c.a. 5m

Tiefe: c.a. 4m

Höhe: c.a. 4m

Es ist durchaus möglich das Bühnenbild auf eine kleinere Bühne anzupassen.

### Boden

Tanz- oder Schwingboden oder Bühnenboden Holz

### Ton/Licht

- 17 fresnel (3 mit violetterem Filter, 1 mit blauem Filter)
- 12 par
- 4 moving lights
- 1 Profilscheinwerfer mit rotem Filter
- Saallautsprecher für einfache szenische Beschallung

- Stromanschluss auf der Bühne
- Beamer (Kurzdistanz) bringen wir selber mit

### **Bühnenbild**

- Vorrichtung an der Decke (Hacken oder Barren) um einen leichten Metallring (1,49 m Durchmesser) aufzuhängen.

### **Requisiten**

- überdimensionale Sporttasche
- Metallring (2,40m Durchmesser) mit Tüllnetz
- aufblasbare Banane
- überdimensionale, goldene Pinzette
- Gymnastikball
- Yogamatte
- Theraband
- mechanischer Staubsauger
- Kondome
- Blumen glitzer
- Nicolas Cage-Kissen
- Sportflasche
- Handtuch
- Beamerbox, schwarz

### **Height of hanging points (truss) not lower than 4.5 m high !!!**

We will hang 1 metal ring (ca. Ø 1m 48) with climbing rope. The textiles are tied to the pipe with fisherman lines according to the plan and approx. 4 m above the ground.

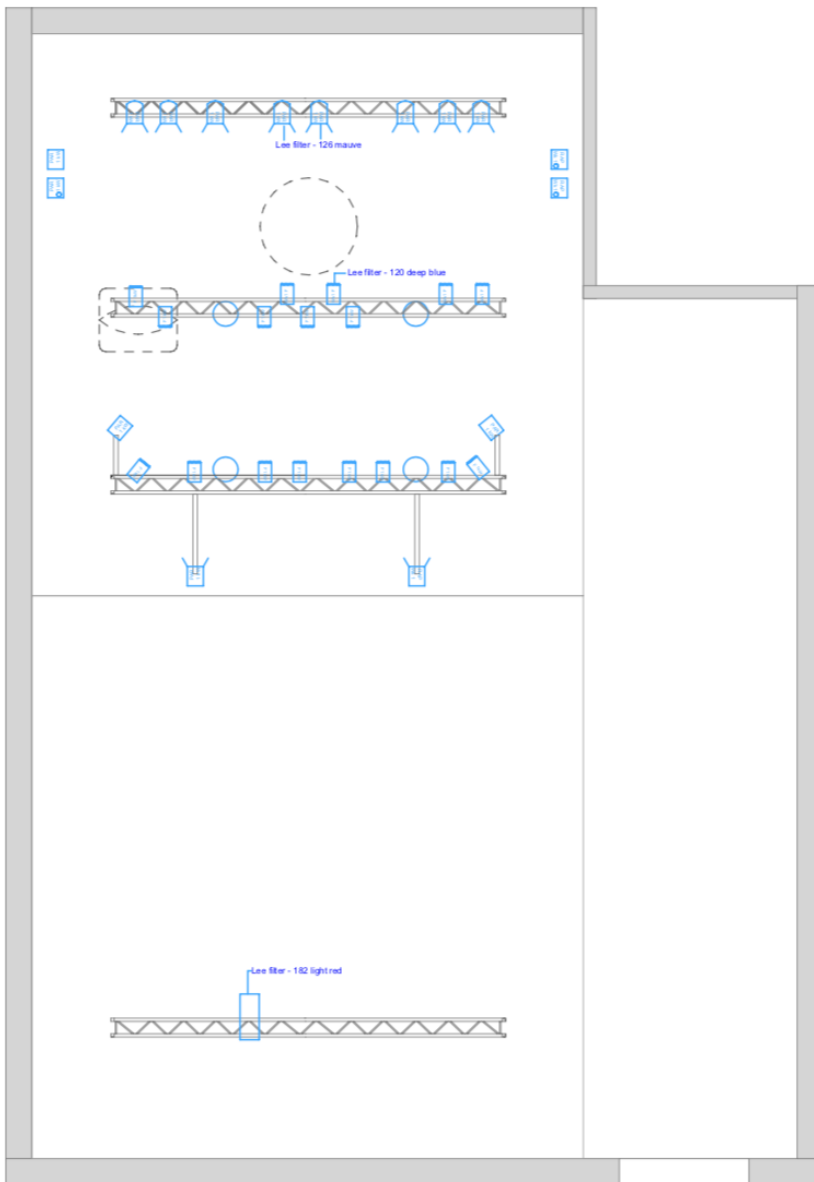
weigh approx. 2 kg.

We need:

- 2x wire ropes with loop so that the height can be adjusted ideally.



The lighting concept functions via a standard light, with front, rear light etc.



**Light Plan - My Pussy Real Soft**  
 Premiere  
**02 September 2021, Postremise**

**Timing and Staff**

The entire set installation takes one full working day (09:00-22:00).

On the day of arrival (even before the actual TE) Arrival technicians and our equipment.

1 technician who will show us around (parking lot etc.) and show us the room and explain everything briefly.

Set-up day

09:00 Unload

09:00 Hang everything                      2 People Light Tech, stage designer

13:00 Pause

14:00 Lighting and Patching until finished approx. 17:00

2 People Light Tech, stage designer

Short Pause for 1. Soundcheck            1 Person (sound)

Tag der Aufführung

09:00 2. Soundcheck                      1 Person (sound)

10:00 Prepare for Rehearsals

11:00 Warm-up

12:00 Rehearsal

17:00 End of rehearsal and prepare for Performance

Dismantle and Loading directly after the last performance (approx. 2h)

## Light Cue List:

Intensity of the lights has to be checked in each venue.

Before the show:

- entrance light
- L15 with blue filter

audience is seated. entrance light off.

**Q1**- L15 with blue filter

sound cue: 7 bells, princess comes out of the cocoon.

**Q2**- L15, L4, L9, L19, L20, L27, L28

“ich habe nur von dir geträumt”

visual cue - princess goes back into the cocoon - puts apron on.

out of the cocoon

**Q3**- L15, L4, L9, L19, L20, L27, L28

L10, L11, L12, L13, L14, L16, L17, L18, L21, L22, L23, L24, L25, L26, L36, L37

**Q4** - L34, L35 - manual up and down.

Sonja on her knees - include L29. Cleans her mouth to L34, L35

end of the song

**Q5** - L15, L9, L19, L20, L27, L28

L10, L11, L12, L13, L14, L16, L17, L18, L21, L22, L23, L24, L25, L26, L36, L37

BLACK - Video 1 - end of the video (21, 22 - light)

**Q6** (haarentfern) - L15, L9, L19, L20, L27, L28

L10, L11, L12, L13, L14, L16, L17, L18, L21, L22, L23, L24, L25, L26, L36, L37

sound cue: baywatch song

**Q7** - add to Q6 - L30-33 follow in red

BLACK - VIDEO 2

out of the cocoon

**Q8** - L15, L9, L19, L20, L27, L28

L10, L11, L12, L13, L14, L16, L17, L18, L21, L22, L23, L24, L25, L26, L36, L37

sound cue - ti amo

crossfade Q8 to L36, L37

end of ti amo, back to Q8

Sonja enters cocoon - Play sound "Hello Girls!"

music beat with side lights: L34, L35 (they remain on)

once music ends lights on:

**Q9** - L15, L9, L19, L20, L27, L28

L10, L11, L12, L13, L14, L16, L17, L18, L21, L22, L23, L24, L25, L26, L34, L35, L36, L37

Sonja drinks water: L34, L35 off

starts singing "Santa Claus is coming to town"

starts dimming off the lights

Sonja goes inside the cocoon

**Q10** - L15 (slow)

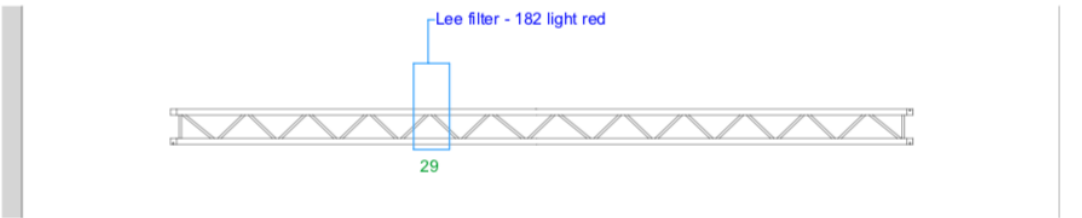
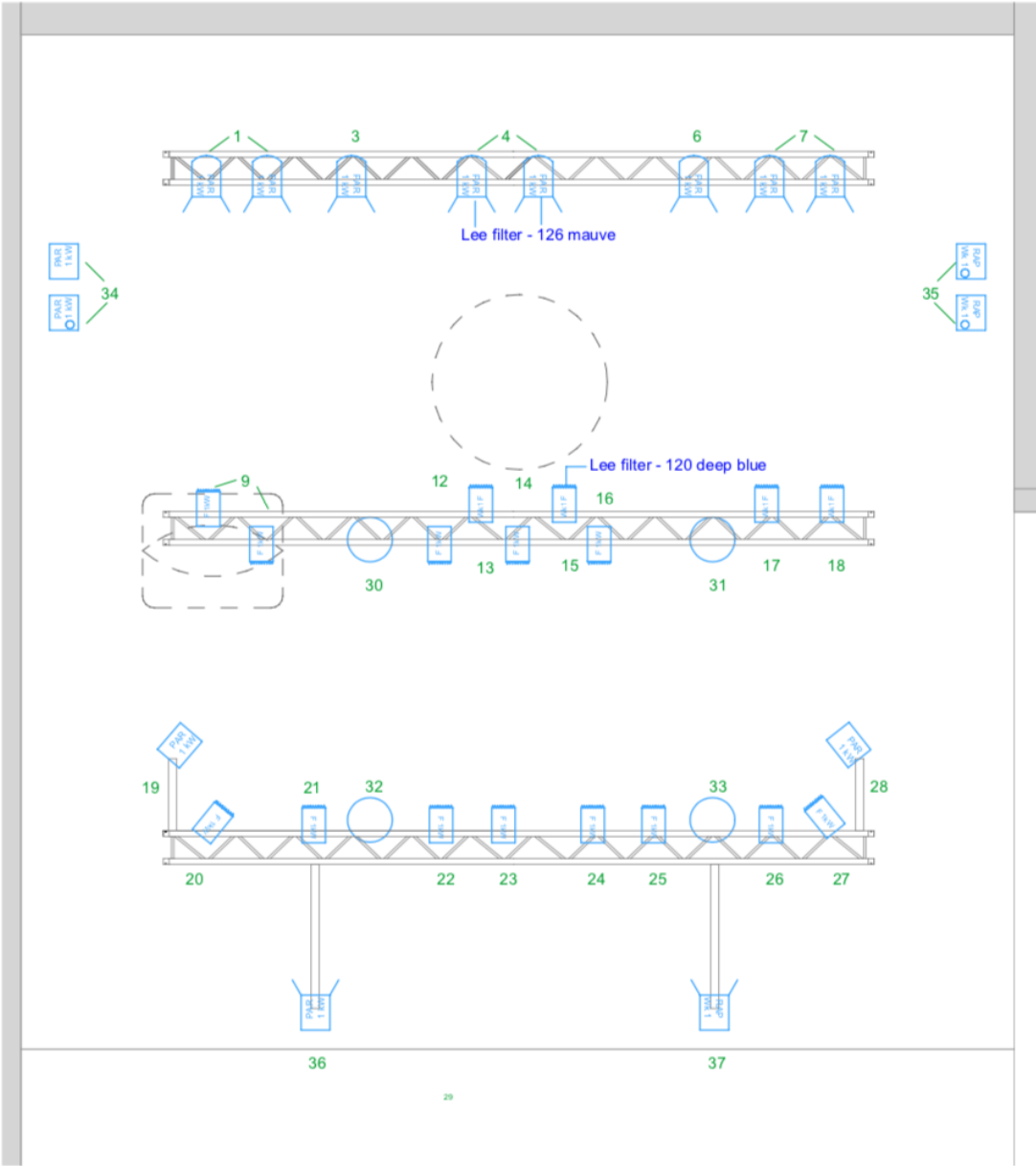
sound: describes clothes (weisse pulli, weisse hose - 21, 22.. )

BLACK (5 secs)

applause light

audience light





**Light Plan - My Pussy Real Soft**

Premiere  
**02 September 2021, Postremise**